



SUNPARK
RESIDENCE

CALL 0733843002

LUXURY LIVING IN SYOKIMAU

THE LOCATION

- just behind Gateway Mall.
- Set on a vast 6.2 acres.
- In close proximity to the new Nairobi Railway Terminus.
- A short drive from Jomo Kenyatta International Airport.
- Easy connectivity to the Nairobi Mombasa Road expressway, less than 1 KM away.

THE COMMUNITY

- Spacious 3 bedroom apartments with 3 bathrooms, size 1550 sq ft / 145 sqm.
- Spacious 2 bedroom apartments with 2 bathrooms, size 1150 sq ft / 110 sqm.
- Each block has an elevator.
- Lush landscaping and manicured gardens in between blocks.
- Kids park with playground, benches, and sandpit.
- Borehole water in all blocks.
- Perimeter wall with electric fencing.
- 24-hour manned entry and exit with controlled parking.
- CCTV monitoring.
- Separate visitors parking.
- One car parking per home.
- Shops and convenience stores.



**Sunpark
Residence**



THE APARTMENTS

- Exclusively designed interiors with a touch of sophistication.
- Heavy duty, sliding UPVC windows.
- Internet and TV access points.
- Contemporary design buildings with stylish design.
- Superior quality porcelain tiles throughout the apartment.
- Visitors cloakroom.
- Well lit bedrooms with separate bathrooms.

Flexible payment plans for both



Site Plan



Amalia Syokimau Apartments

CHADLY ROAD

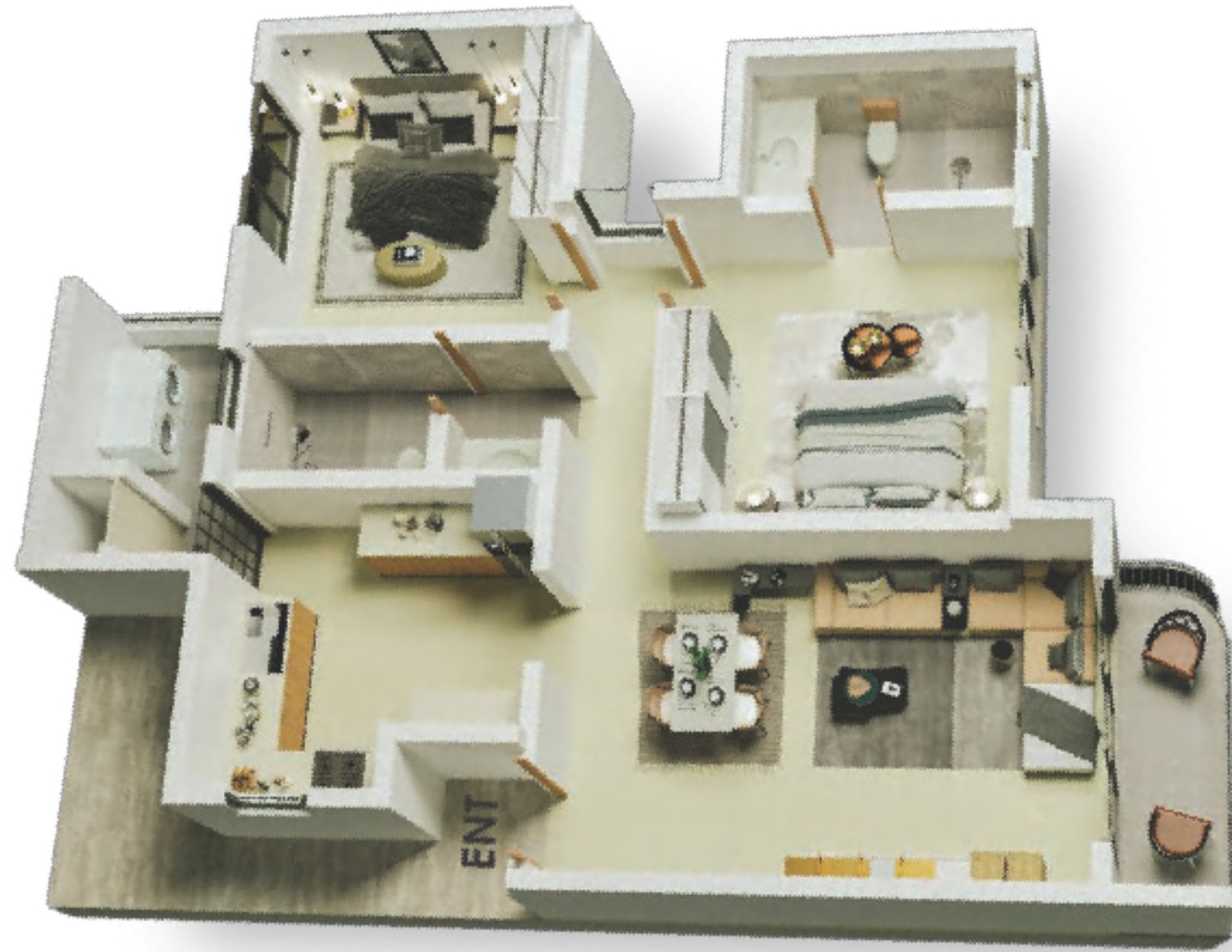
Road

Road

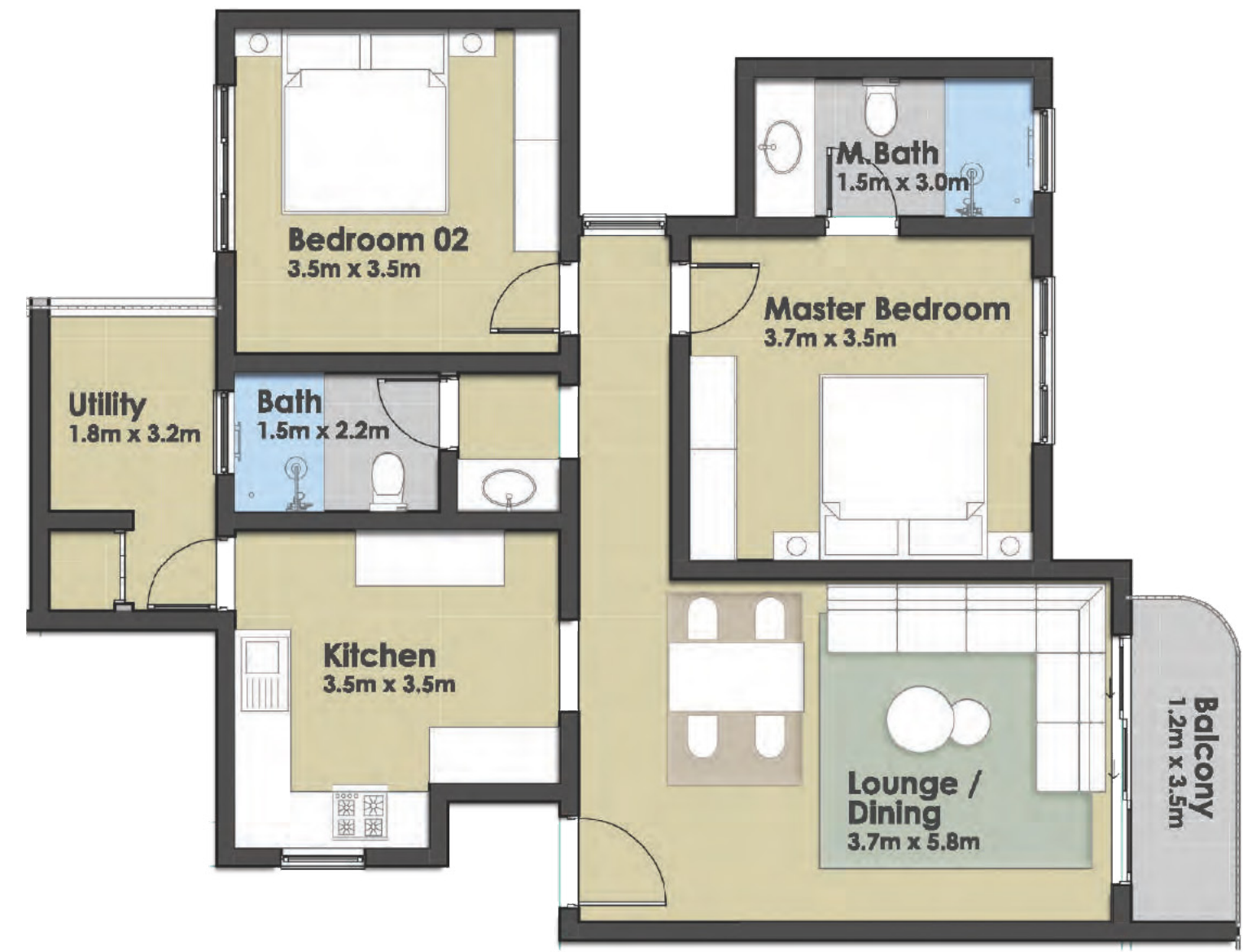
Fortis Industrial Park

Sunpark Phase 2

Lifestyle Terraces



2 Bedroom



2 Bedroom - 1150 sq ft / 110 sqm



3 Bedroom



3 Bedroom - 1550 sq ft / 145 sqm